



Nutrition Sector Response in Nigeria

June, 30, 2017



NIGERIA
Nutrition Sector Coordination.

Nutrition Sector Dashboard

PEOPLE IN NEED



2016

2.5 mil

Current (2017)

3.4 mil

PEOPLE ASSISTED



2016

1.7mil

Current (2017)

226,576*

FUNDING REQUIREMENT

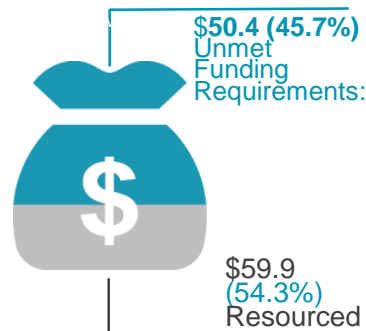


2016

33.2 mil

Current (2017)

110.3 mil



STRATEGIC PRIORITIES

Nutrition Sector Objective #1

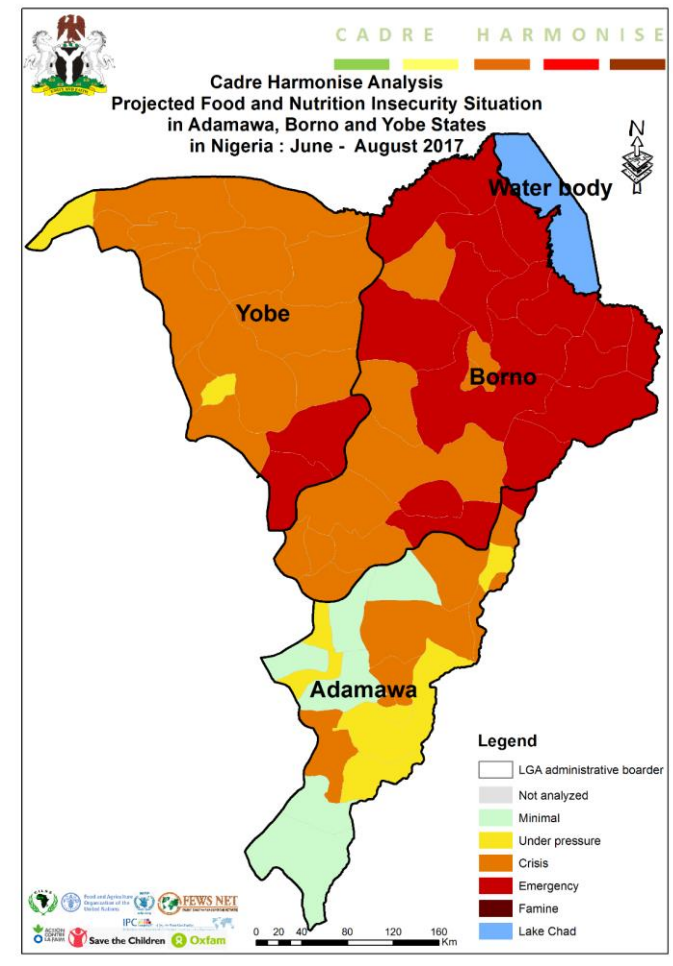
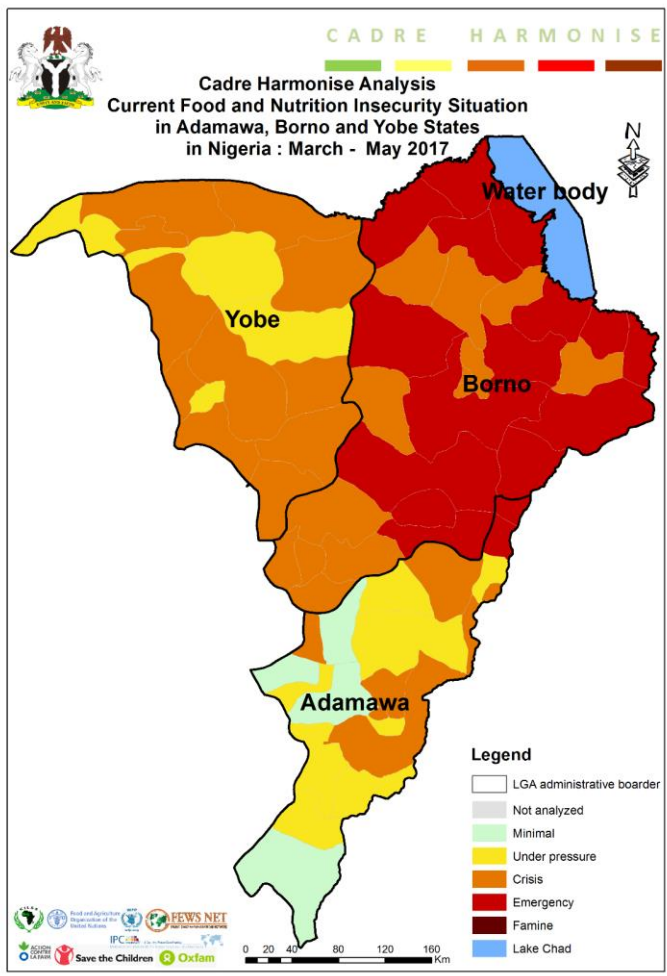
Improve equitable access to quality lifesaving services for management of acute malnutrition for children (boys and girls 6-59 months) and pregnant and breastfeeding women through systematic identification, referral and treatment of acutely malnourished cases.

Nutrition Sector Objective #2

Promote access to services preventing under-nutrition for the vulnerable groups (children under the five and pregnant and breastfeeding women) focusing on infant and young child feeding in emergencies, micronutrient supplementation, and blanket supplementary feeding.



Cadre Harmonize Joint FS and Nutrition situation analysis framework

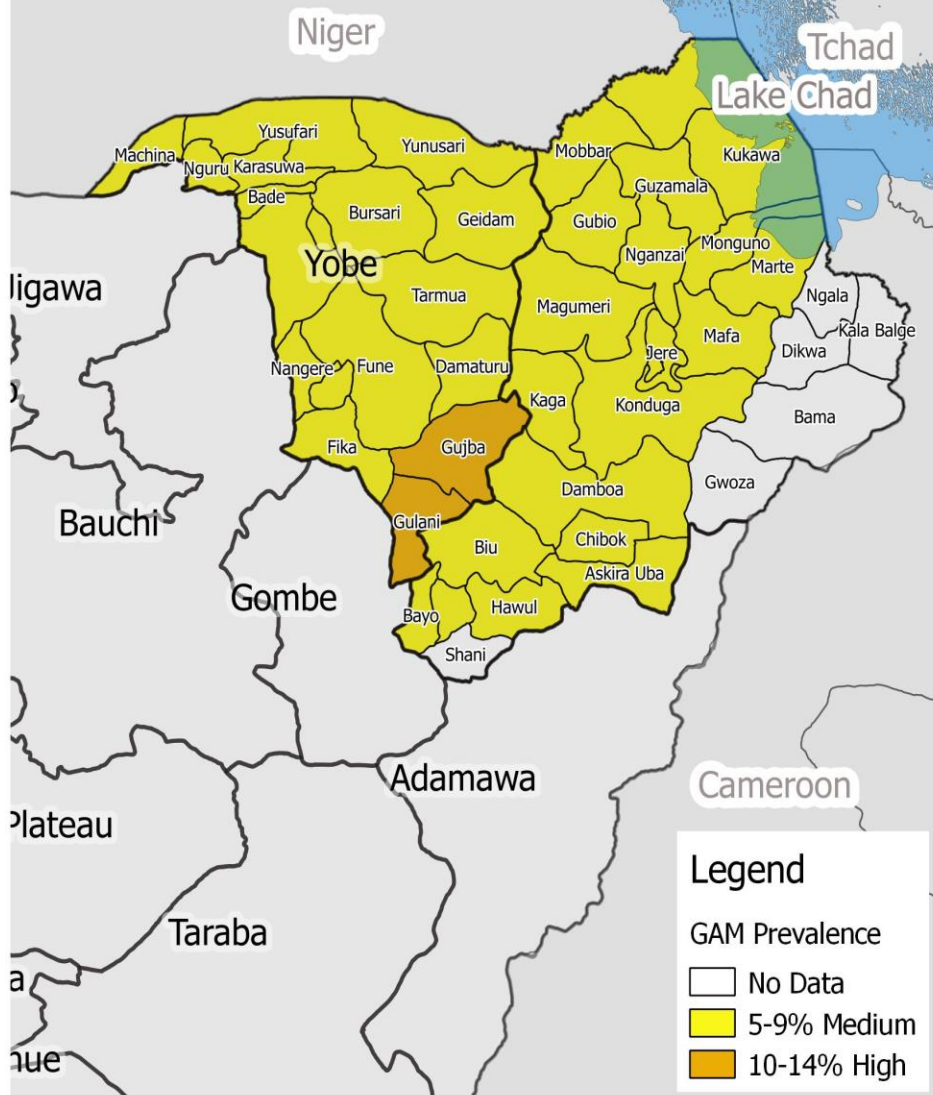




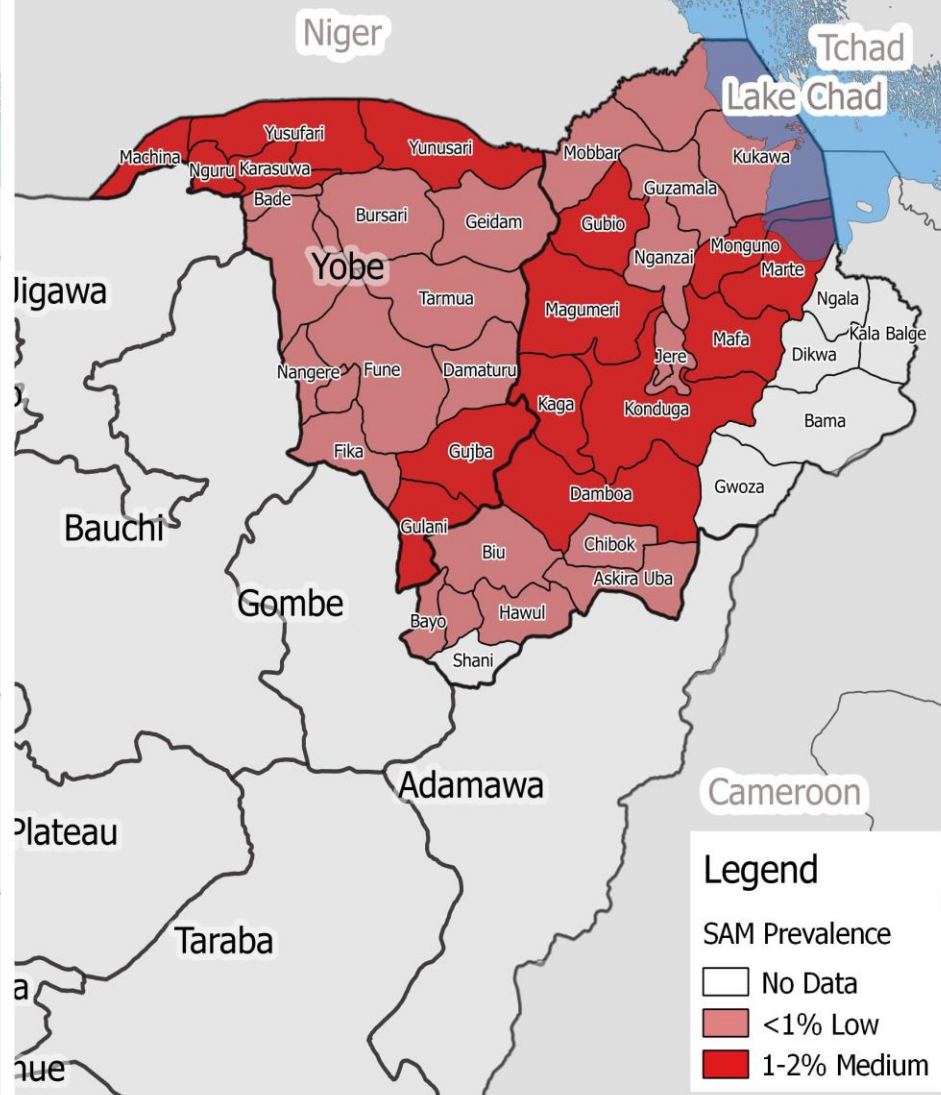
NUTRITION AND FOOD SECURITY SURVEILLANCE : NORTH EAST NIGERIA – EMERGENCY SURVEY

March 2017

Global Acute Malnutrition (GAM) by Weight for Height (0-59 months)



Severe Acute Malnutrition (SAM) by Weight for Height (0-59 months)



The boundaries, names, and designations used on this map do not imply official endorsement or acceptance by UNICEF, the Global Nutrition Cluster, or the Nigeria Nutrition in Emergency Working Group. For further information please visit: humanitarianresponse.info/en/operations/nigeria/nutrition; or on Facebook: "Stop Child Malnutrition Nigeria". Please send feedback to: nga.nut@humanitarianresponse.info. Date Saved: 04/21/2017.



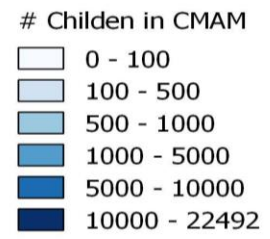
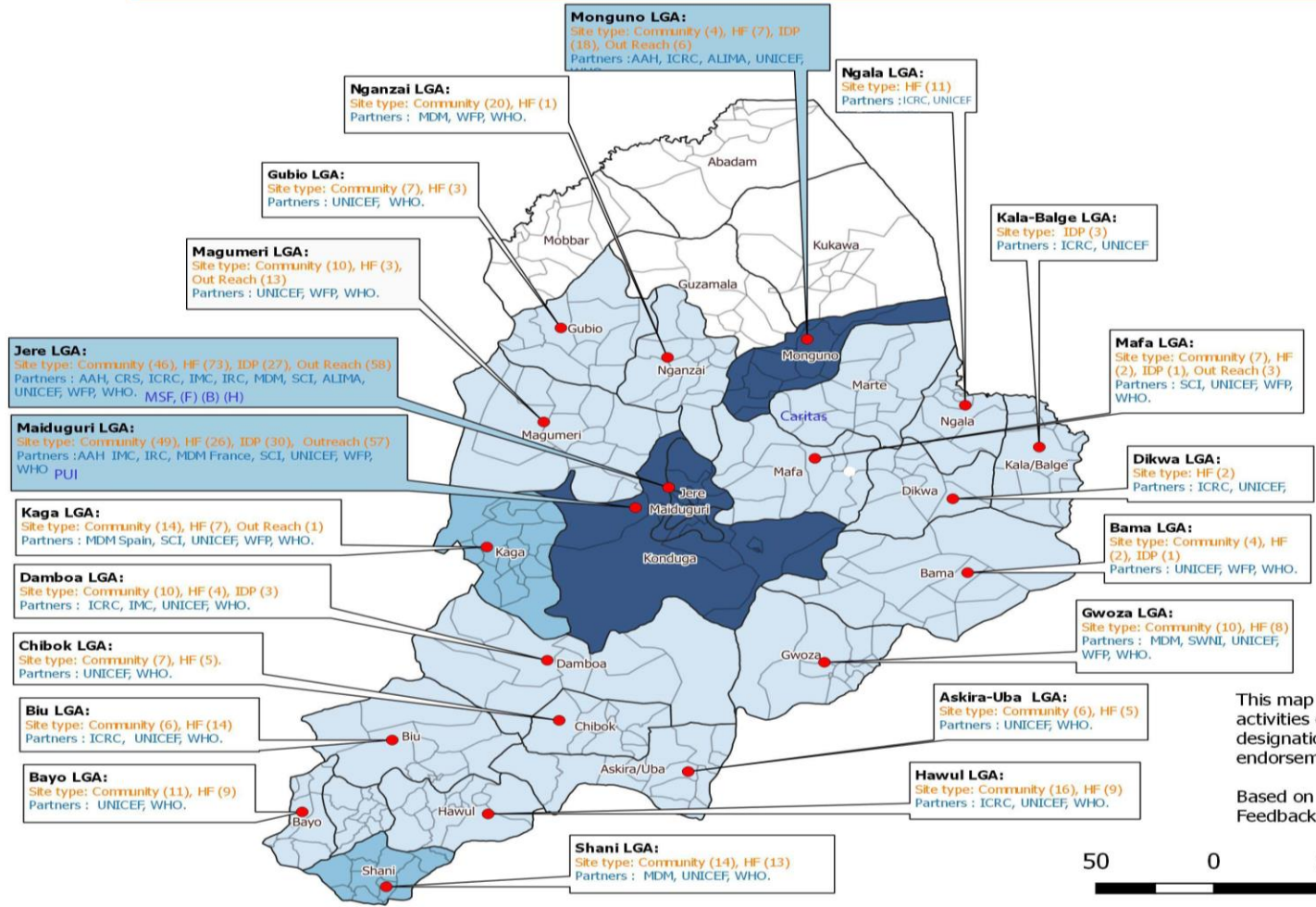
Operational Presence Maps



NIGERIA
Nutrition Sector Coordination.

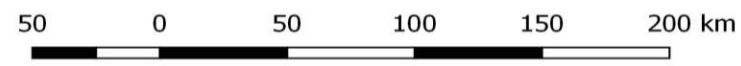
Nutrition Sector: Borno Partners Presence

Total Numbers of Partners 19



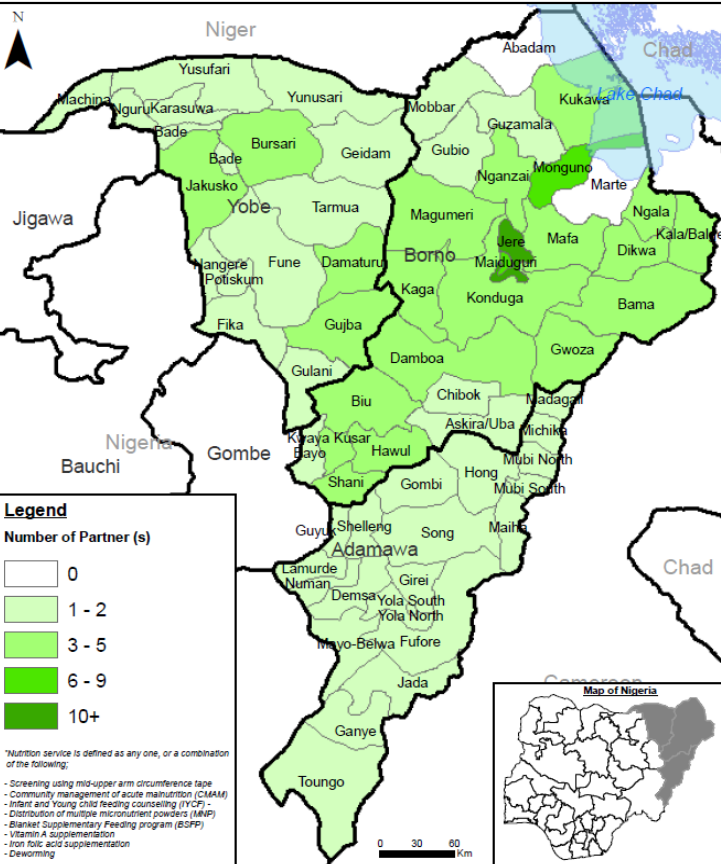
This map was produced for use in humanitarian relief activities only. The boundaries and names shown and the designations used in the map do not imply official endorsement or acceptance by the United Nations.

Based on "5Ws" nutrition sector partners updates of March. Feedback: sahmed@unicef.org



Nutrition Sectors North East LGA Presence Map

NIGERIA - North East
Partner Presence - May 2017



Legend

Number of Partner (s)

- 0
- 1 - 2
- 3 - 5
- 6 - 9
- 10+

*Nutrition service is defined as any one, or a combination of the following:

- Screening using mid-upper arm circumference tape
- Community management of acute malnutrition (CMAM)
- Infant and Young child feeding counselling (IYCF)
- Distribution of ready-to-use therapeutic food (RUTF)
- Blanket Supplementary Feeding program (BSFP)
- Vitamin A supplementation
- Iron-folate acid supplementation
- Deworming

This map was produced for use in humanitarian relief activities only. The boundaries and names shown and the designations used on this map do not imply official endorsement or acceptance by the United Nations.

Map Reference: Nigerian Nutrition In Emergencies Working Group
 Creation date: 31st May 2017
 Feedback: nge.nut@humanitarianresponse.info
 Source: Government of Nigeria (OSGOF), OCHA, NIEWG SW

ADAMAWA			
LGA	PARTNER	LGA	PARTNER
Demsa	UNICEF	Maiba	RC
Fufore	UNICEF	Mayo-Belwa	UNICEF
Ganye	UNICEF	Michika	RC, UNICEF
Girei	UNICEF	Mubi North	UNICEF
Gombi	UNICEF	Mubi South	RC, UNICEF
Guyuk	UNICEF	Numan	UNICEF
Hong	RC	Shelling	UNICEF
Jada	UNICEF	Song	UNICEF
Lamurde	UNICEF	Toungo	UNICEF
Madagail	UNICEF	Yola North	UNICEF
		Yola South	UNICEF

BORNO			
LGA	PARTNER	LGA	PARTNER
Abadam		Gwoza	MSF-SPAIN, SWNL, WFP, WHO, UNICEF
Askira/Uba	WHO, UNICEF, PI	Hawul	ICRC, WHO, UNICEF
Bama	WFP, WHO, UNICEF	Jere	AAH, CRS, ICRC, IMC, RC, MSF-FRANCE, MSF-HOLLAND, MDM, MSF-BELGIUM, SCI, ALIMA, WFP, WHO, UNICEF
Bayo	WHO, UNICEF	Kaga	MSF-SPAIN, SCI, CRS, WFP, WHO, UNICEF
Biu	ICRC, WHO, UNICEF	Kala/Balge	ICRC, WHO, UNICEF
Chibok	WHO, UNICEF	Konduga	SCI, WFP, WHO, UNICEF, ACF, IMC
Damboa	ICRC, IMC, MSF-HOLLAND, WHO, UNICEF, IMC	Kukawa	AAH, ICRC, WHO, UNICEF, IMC
Dikwa	ICRC, WFP, WHO, UNICEF, IMC	Kwaya Kusar	ICRC, WHO, UNICEF
Gubio	WHO, UNICEF	Mafa	SCI, WFP, WHO, UNICEF, PI
Guzamala	WHO	Magumeri	AAH, WFP, WHO, UNICEF
		Maiduguri	AAH, IMC, RC, MDM, PUI, SCI, WFP, WHO, UNICEF
		Marte	WHO
		Monguno	AAH, ICRC, ALIMA, WFP, WHO, UNICEF
		Ngala	ICRC, WFP, WHO, UNICEF
		Nganzai	AAH, MSF-SPAIN, WFP, WHO, UNICEF
		Shani	MSF-SPAIN, WHO, UNICEF

YOBE			
LGA	PARTNER	LGA	PARTNER
Bade	WFP, UNICEF	Machina	ACF
Bursari	CRS, WFP, UNICEF	Nangere	ACF
Damaturu	MSF-SPAIN, WFP, ACF, UNICEF	Nguru	WFP, UNICEF
Fika	ACF	Potiskum	WFP, ACF
Gaidam	ACF	Tarmua	ACF
Gulba	WFP, UNICEF	Yunusari	WFP, ACF
Jakusko	CRS, WFP, UNICEF	Yusufari	WFP, UNICEF
Karasuwa	CRS, UNICEF		

ORGANISATIONAL ACRONYM

ACF	Action Against Hunger	PI	Plan International
ALIMA	Alliance for International Medical Action	PUI	Premiere Urgence
CRS	Catholic Relief Services	SCI	Save the Children International
ICRC	International Committee of the Red Cross	TMOR/IGH/CDCA	State Ministry of Health/ State Primary Healthcare Development
IMC	International Medical Corps	SWW	Social Welfare Network Initiative
IRC	International Rescue Committee	UNICEF	United Nations Children's Fund
MDM	Médicins du Monde	WFP	World Food Program
MSF-BELGIUM	Doctors Without Borders- Belgium	WHO	World Health Organisation
MSF-FRANCE	Doctors Without Borders- France		
MSF-HOLLAND	Doctors Without Borders- Holland		
MSF-SPAIN	Doctors Without Borders- Spain		

Profile

Donors:.....3

INGOs:.....18

FGoN:.....3

NNGOs:.....2

UN:.....3

IFRC/ICRC:..2

Observer:..4



Current Nutrition Sector Interventions



NIGERIA
Nutrition Sector Coordination.

JOINT PiN



Joint targeting:
3.4 M beneficiaries targeted for **Nutrition Sector** interventions are part of **5.1M.** beneficiaries targeted in **Food Security Sector**

TARGETED POPULATION



- The Nutrition and Food Security Sectors' targeting was based on *Cadre Harmonise* phase classification
- The **2.7 M women and children** targeted for nutrition interventions are part of the **5.1M** beneficiaries that Food Security Sector targeted with various Interventions

APPROPRIATE FAMINE PREVENTION RESPONSE PACKAGE

- Food assistance (in-kind and cash) - 3.2 m people
- Agriculture (crop production inputs- tools seeds& fertilizer) – 1.9 m people
- Nutrition (total 2.7m people part of 5.1m people)
 - SAM - 315,000
 - IYCF – 731,335
 - Vitamin A - 1.9m



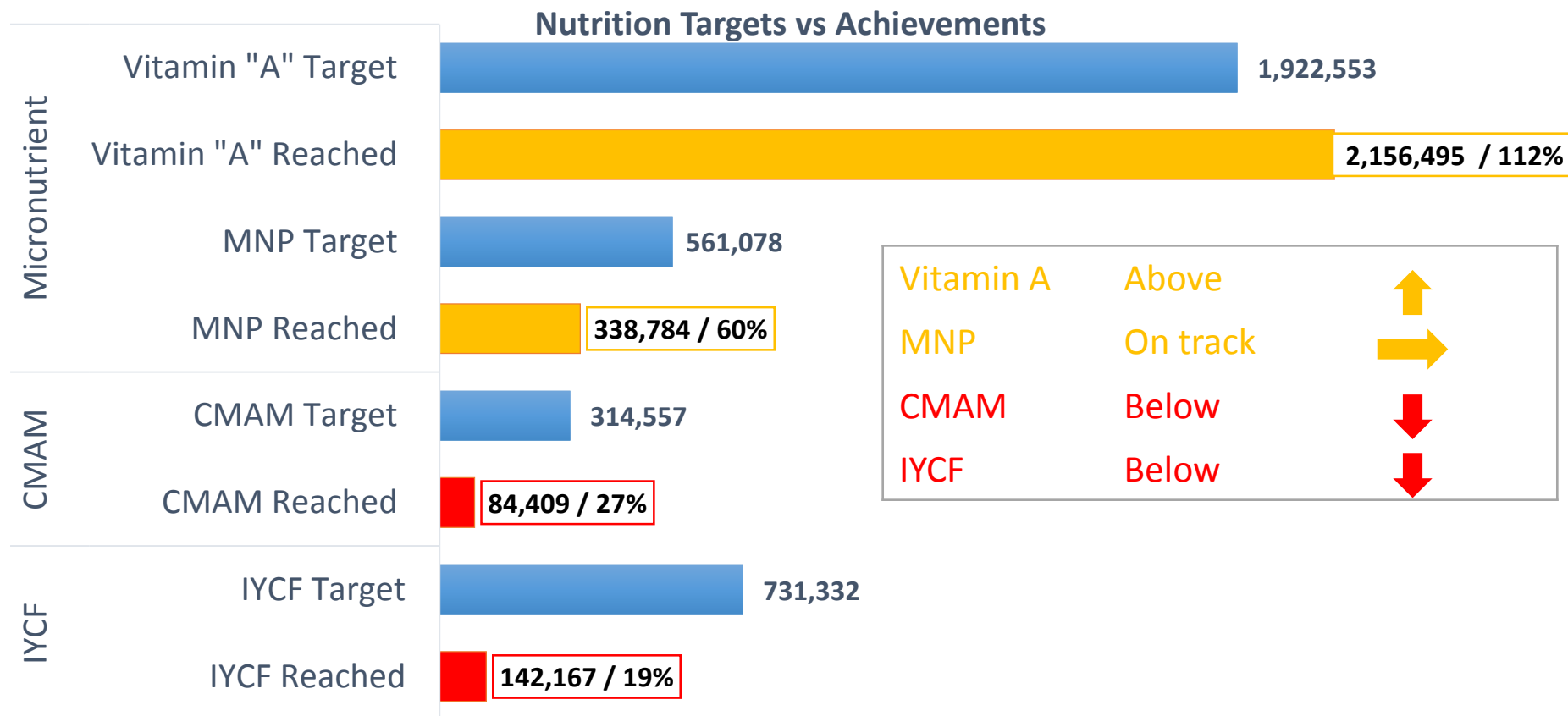
Achievements to date - Current FS / Nutrition Sectors Joint Programming



- 275,801 households with acutely malnourished children targeted for general food distributions
- 12,209 HH received Cash Transfers linked to uptake of nutrition services
- 4 Cadre Harmonise conducted - Evidence based multi sectorial (food security and nutrition) assessment
- 18 Joint Rapid response mechanism (RRM) missions to access constraint areas conducted.



Nutrition Sector Achievements



Challenges

- Secondary displacement occasioned by flooding, returnees from Cameroon and relocations due to the inability of the Banki and Pulka IDP camps to hold more IDP's.
- Mobilize donors and partner with capacity to fund and implement rapid response or mobile emergency response teams as well as multi sector projects.
- The sector is challenged with capacity to provide inpatient care for severely malnourished with medical complications in newly liberated areas (qualified human resources)
- Lack of commitment from implementing partners to update funding status on financial tracking services FTS.
- Likelihood of increased insurgency attacks due to the vegetation overgrowth and limited movement of security forces affecting service delivery.
- Slow progress to achieving the sector targets on SAM due to inadequate service coverage, weak community nutrition component, sub optimal reporting and limited workforce from State in the areas with access challenges.



Recommendations

- Advocate for further commitment by donors i.e DFID to increase funding for joint food and nutrition intervention through the use of cash based transfer linked to SAM admission.
- Discussions on developing Joint approach on assessment initiated with the EFSA teams discussing with the NFSS team to see the possibilities of combining the two assessments.
- Task force formulated between the food and nutrition sector to facilitate the agenda for the joint meeting between the two sectors and implement the joint action plan.
- Implement the nutrition and food security sectors flood and returnees contingency plan and a multi sectorial rapid response mechanism proposal submitted in the First allocation of the Nigerian humanitarian pooled funding.
- Round two of the nutrition and food security surveillance training ongoing and data collection and analysis to be finalized by mid-July.



Key asks from GNC and Global level Partners.

- Support required from GNC or TRRT on finalizing the 2017- 2018 nutrition sector response / scale-up plan, current draft being reviewed by sector partners.
- Support the current stand by partner IM with GNC information management training for country clusters.
- GNC depending on availability technically support with the CCPM validation workshop scheduled 13th July 2017 and subsequent presentation of the action plan to CLA and HCT.
- Global partners with presence in Nigeria to support their technical staff to establish Mobile/ rapid response capacity in their response.



