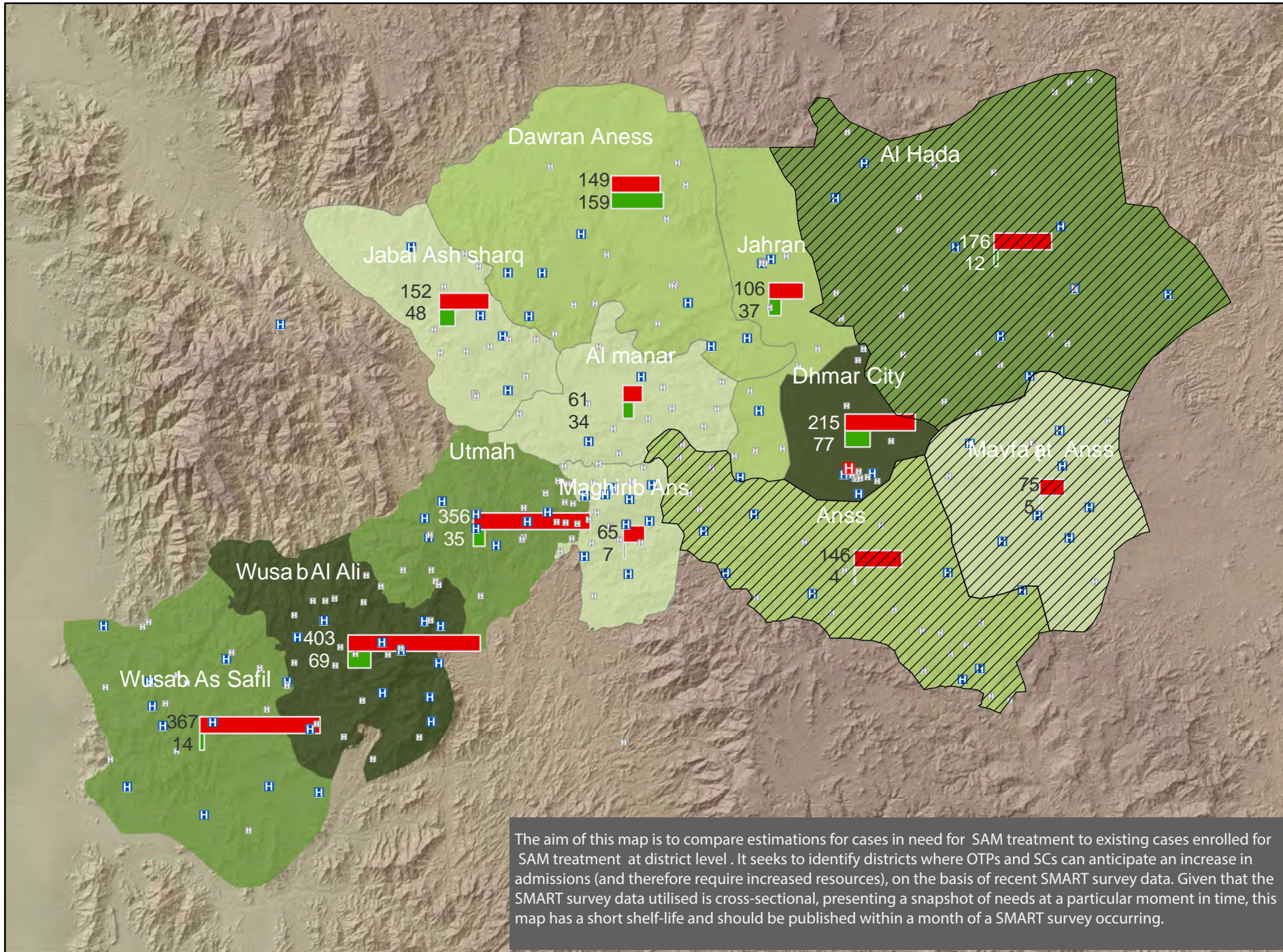


Number of SAM cases in need for treatment vs. Number of SAM cases admitted and in treatment in May 2013, by district - Dhamar Governorate ,Yemen



Legend

- Stabilization Center
- Health Facilities with OTP
- Health Facilities without OTP
- Governorate Bounda
- District Boundary
- Hard to Reach Area

Population 6-59 month

- < 20,000
- 20,001 - 30,000
- 30,001 - 40,000
- > 40,000

SAM U5 cases in May 2013 (point prevalence)

SAM U5 cases admitted and in treatment in May 2013

Map data source(s):

Total population: Government Statistics Department (CSO)

Population 6-59 mo: 18% of total population

% SAM: [Dhamar May 2013 SMART survey](#)

SAM U5 cases in May 2013 (point prevalence): [Pop 6-59 mo x %SAM May 2013](#)

SAM U5 cases admitted and in treatment in May 2013: [New admissions + currently enrolled in treatment @t end of May 2013 \(from Yemen Nutrition Cluster Reporting Database\)](#)



Map Scale

10 Kilometers

The designations employed and the presentation of material on this map do not imply the expression of any opinion whatsoever on the part of the Secretariat of the United Nations concerning the legal status of any country, territory, city or area or of its authorities, or concerning the delimitation of its frontiers or boundaries.

The aim of this map is to compare estimations for cases in need for SAM treatment to existing cases enrolled for SAM treatment at district level . It seeks to identify districts where OTPs and SCs can anticipate an increase in admissions (and therefore require increased resources), on the basis of recent SMART survey data. Given that the SMART survey data utilised is cross-sectional, presenting a snapshot of needs at a particular moment in time, this map has a short shelf-life and should be published within a month of a SMART survey occurring.