

Real-time translation

Traduction en temps réel

Traducción en tiempo real

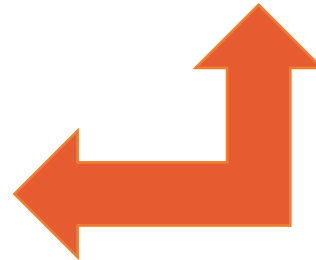
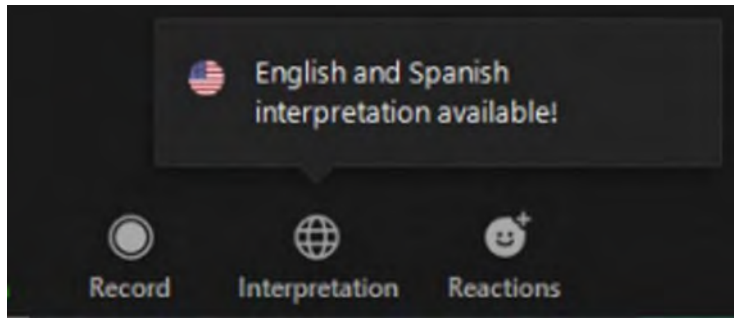
ترجمة فورية

Translation is accessible by clicking the globe icon on the bottom of your screen.

La traduction est accessible en cliquant sur l'icône du globe terrestre au bas de votre écran.

Se puede acceder a la traducción haciendo clic en el icono del globo en la parte inferior de la pantalla.

يمكن الاستفادة من الترجمة الفورية عن طريق النقر فوق رمز الكرة الأرضية أسفل الشاشة.





Technical Alliance

Welcome to the GNC Technical Alliance

Wednesday 2nd December 2020
3-4pm (GMT+1)



AGENDA

Introductory remarks	Victor Aguayo (UNICEF)
Overview of the GNC Technical Alliance	Megan Gayford (UNICEF)
Case Study 1: Access to Information	Yara Sfeir (UNICEF)
Case Study 2: Technical support/deployments	Kalil Sagno (DRC Nutrition Cluster Coordinator)
Case Study 3: Guidance COVID-19 activities	Tanya Khara (ENN)
Q&A	Andi Kendle & Ben Allen (International Medical Corps)
Where to reach us	Colleen Emary (World Vision)
Reflections	Dan Irvine (World Vision)

Victor Aguayo (UNICEF)

Advice | Guidance | Expertise | Learning

A decorative horizontal bar at the bottom of the slide, composed of six colored rectangular segments: orange, blue, red, light red, green, and grey.

What is the Alliance?

The Alliance is an **initiative to support practitioners** to improve the quality of nutrition **preparedness, response, and recovery**, by enabling and providing technical support through multiple channels.



GLOBAL
NUTRITION
CLUSTER

Technical Alliance



Why was the Alliance created?



Why the Technical Alliance?



Connect practitioners to the most relevant nutrition resources and guidance



Answer technical questions



Deliver in-depth remote support or in-country deployments



Develop interim guidance or expert advice on emerging nutrition technical issues

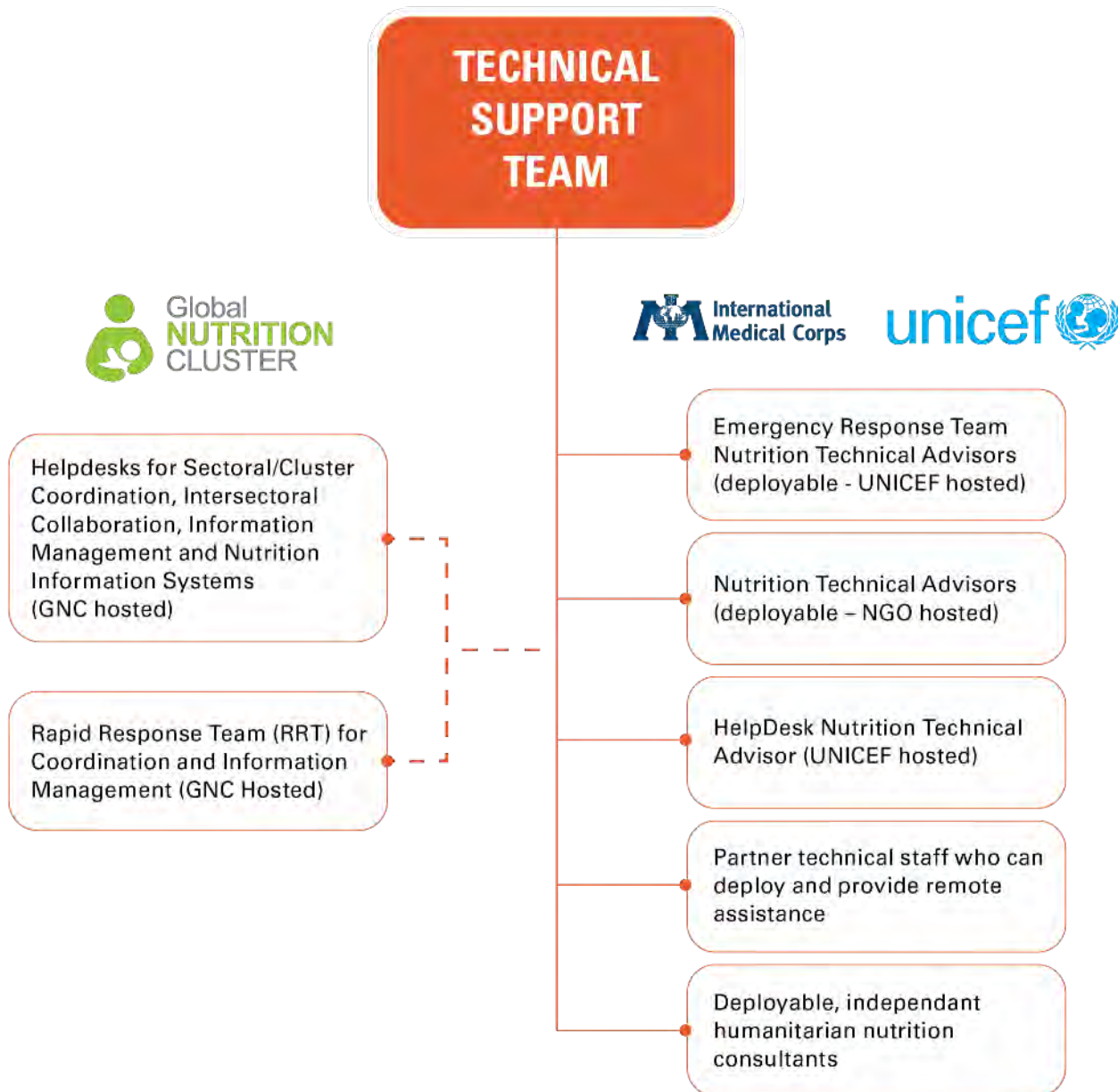


Develop and disseminate high-quality learning

How is the Alliance structured?

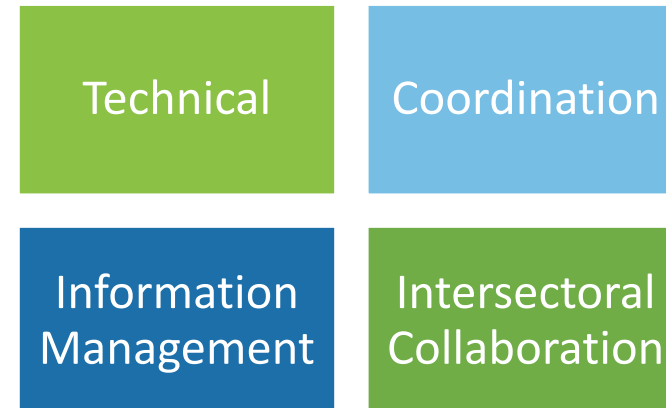


GNC Technical Alliance Partners









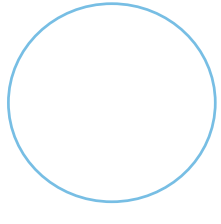


Nutrition specialists

- ✓ On standby to answer questions
- ✓ Identify relevant resources
- ✓ Provide more in-depth support



Faces of the Technical Support Team

Megan	Andi	Ben	Geraldine	Yara	Angeline	Briony	Victoria	Vacant
								
				Technical	Capacity Development	Coordination	Nutrition Information	Inter-Sectoral Collaboration

Technical Support Team Coordination

Alexa	Sona	Brooke	Martha
			
Assessment	SBC	IYCF-E	CMAM

Help Desks

Joseph	Kirathi	Shabib	Magnat	Faith	Anteneh
					
Technical	Technical	Cluster IM	Cluster IM	Cluster Coordination	Cluster Coordination

Deployable Advisors





Global Thematic Working Groups

- ✓ Experts in thematic areas
- ✓ Advice on challenging problems
- ✓ Development of interim guidance and program adaptation



Technical Alliance

Access to information: How Help Desks provide support

Yara Sfeir
Help Desk, Nutrition in Emergencies
UNICEF



What is the role of the help desk?

- To provide orientation, information and support related to the nutrition response in emergencies
- There are coordination, information management, nutrition information systems and nutrition in emergencies helpdesks
- Access via the GNC Technical Alliance website button:

[Request Support](#)

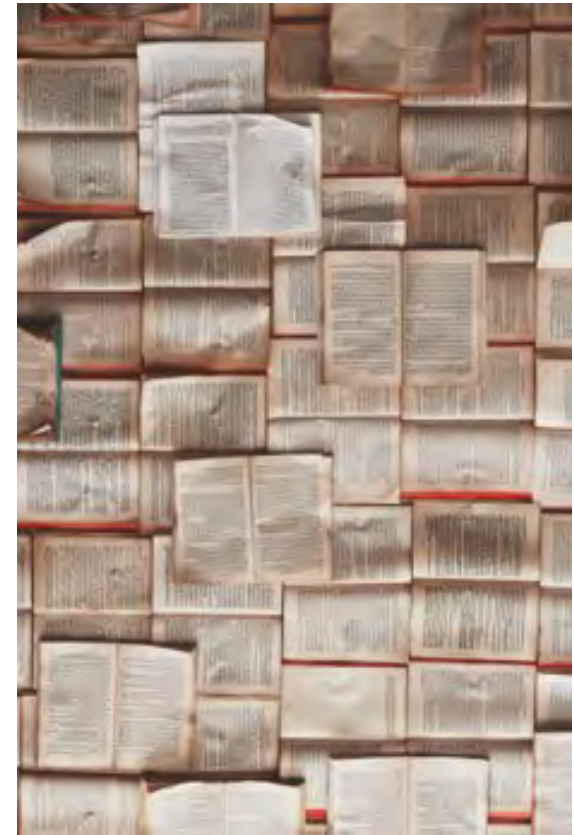
Example of a recurrent request from cluster coordinators and partners

- Cluster coordinators in 2018 were asking for generic terms of references for the technical working groups (TWGs) in country.
- Development of generic terms of reference for the IYCF-E, wasting, nutrition information systems (NIS) and micronutrients TWGs.
- At the onset of the COVID-19 pandemic, TWG Nutrition and COVID-19 ToRs were developed.

Question from the cluster coordination partners and team in Nigeria

Question: 'looking for guidance on conducting a mortality audit in stabilisation centres. If you have such guidance or if you can share best practices?'

- No commonly used tools to conduct a mortality audit exist



Bring a request to the attention of the Global Thematic Working Groups (GTWGs)

- Bring it to the attention of the GTWG on wasting
- Over 10 partners co-led by ENN and UNICEF
- The GTWG was created by the GNC Technical Alliance last year

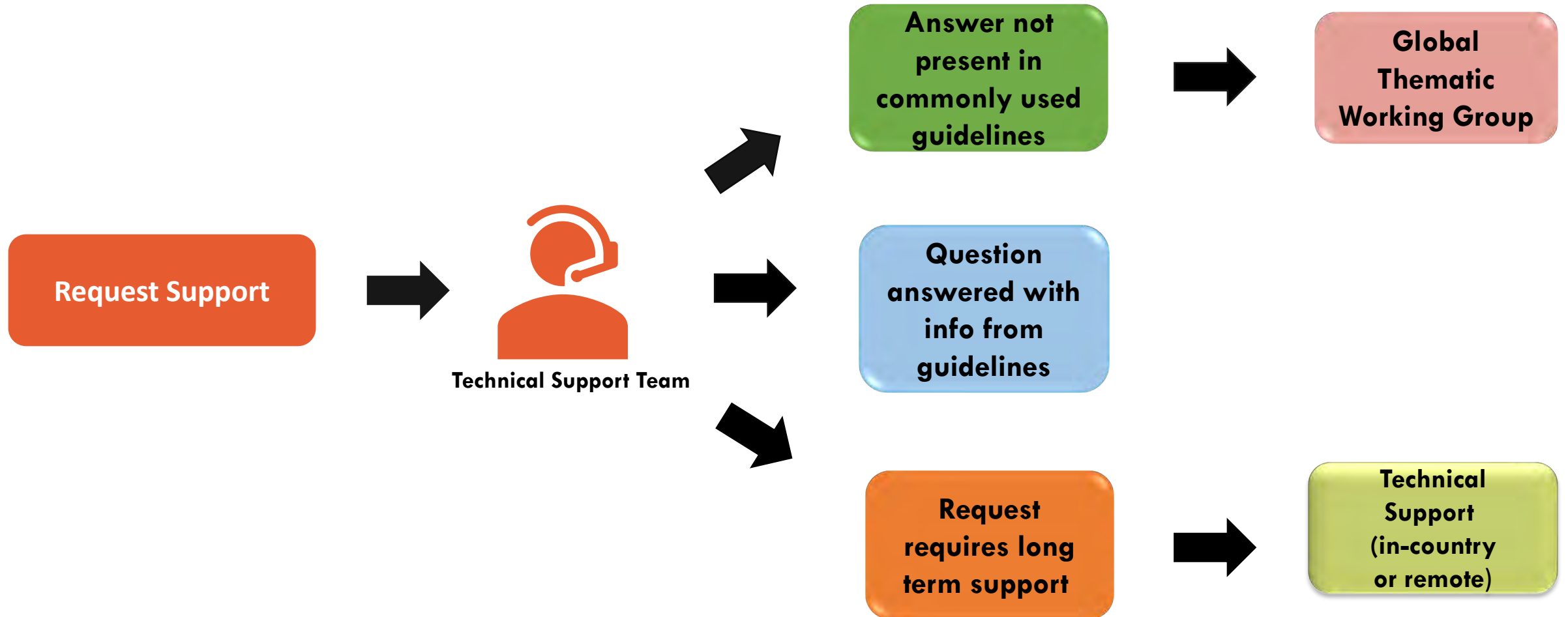


Post your question on the en-net platform

The screenshot displays the en-net website interface. At the top, there is a navigation menu with links for ENN home, Field Exchange, NEX, en-net (highlighted in red), Media Hub, Our work, Our team, and Resources. To the right of the menu are social media icons for Facebook and Twitter, and a language selection dropdown set to 'Select Language'. Below the navigation bar, there are two en-net logos: one for English and one for Français, with the text 'Basculer vers' between them. To the right of the logos are buttons for 'Log in to en-net' and 'Create account'. Further right is a search bar with a magnifying glass icon and a 'Go' button. Below the search bar, the language is set to 'English' with a link to 'Français'. The main content area features a forum post titled 'How to conduct a mortality audit in stabilisation centres?' in red text. Below the title, it states 'This question was posted the Management of wasting/acute malnutrition forum area and has 2 replies.' and a link to '» Post a reply'. The first reply is from Tamsin Walters, an en-net moderator and forum moderator, posted on 12 Nov 2020 at 13:50. The text of the reply reads: 'The nutrition cluster in Nigeria is urgently looking for guidance on conducting a mortality audit in stabilisation centers. If you have such guidance or if you can share best practices, please do post them here, thank you.' The second reply is also from Tamsin Walters, an en-net moderator and forum moderator, posted on 25 Nov 2020 at 12:00. The text of the reply reads: 'Dear all, In the absence of responses to this question, we've been enquiring behind the scenes and there seems to be no commonly used tool for conducting mortality audits in stabilisation centres. If you have any experience or have developed tools, please do share them.'

- Bring it to the attention of the collective via en-net

In a nutshell



How has the Alliance supported the nutrition response in the DRC?

Kalil Sagno

DRC Nutrition Cluster Coordination



Overview of technical support to DRC (since 2018)

- Scale-up of IYCF-E programming
- Improving coverage of wasting treatment
- Strengthening Nutrition Cluster performance

IYCF-E: From theory to practice

Context before

- Limited IYCF-E capacity in the country
- IYCF-E not included in Humanitarian Response Plan (HRP)



Tech RRT IYCF-E
Advisor (2018)

- Support to IYCF-E response and action plan
- Training of trainers for partners



Tech RRT IYCF-E
Advisor
(2019/2020)

- Review BMS management for Ebola cases
- Development mechanism for safer BMS management

Context now

- Integration of IYCF-E in HRP 2019 and 2020
- 118 nutrition cluster partners trained on IYCF-E (by IYCF-E TWG)

Achievements enabled with technical support

1667¹

Infants under 6 months had access to IYCF-E support (10th Ebola response)

PLWs counselled on IYCF-E (10th Ebola response)

92761²

1708¹

Children 6-24 months had access to IYCF-E support (10th Ebola response)

PLWs sensitised on IYCF-E in different contexts from January to August 2020

420081²

Advice | Guidance | Expertise | Learning

Improving coverage of wasting treatment

1. Key findings

Between 2006 and 2019, 30% of wasted children received treatment¹

2. Possible solutions

Reflection on the simplified approaches to treatment

3. Tech RRT support

- Consultation of stakeholders
- Training 32 people in July 2020
- Tools development



5. Implementation

UNICEF has mobilized funds to implement this simplified approach in 2 health zones.

4. Manual and training

Technical group set up to develop a manual and training for partners.

Strengthening cluster performance

CCPM 2018 report indicated
70% functions were
satisfactory or good



GNC deployed a (RRT) IMO
between January-May 2019
before recruitment of
permanent IMO



**ToT for sub-national coordinators
with support from the GNC**
16 provincial coordinators trained
(2019-2020)



CCPM 2019 report
indicated 100% functions
satisfactory or good



Training of cluster partners
+100 cluster partners trained on
cluster coordination (2019-2020)





Merci!



**GLOBAL
NUTRITION
CLUSTER**

Technical Alliance



Technical Alliance

COVID-19 Related Activities

How the Alliance responded to COVID-19 nutrition related needs

Tanya Khara

Emergency Nutrition Network (ENN)



Unpacking the response to COVID-19

Directly
supporting field
actors

Capturing
outstanding
questions &
highlighting key
gaps

Supporting the
development of
rapid guidance

Capturing field
experiences and
programme adap-
tations

Directly supporting field actors

1. Support to **>10 country teams** to adapt the collective nutrition response plans or preparedness plans to COVID-19
2. Ongoing IYCF-E support to **Venezuela** and **Ethiopia** adapted to address new needs presented by COVID-19
3. Remote Technical support provided to support COVID-19 response in:
 - **Myanmar** – IYCF-E and IMAM
 - **DRC** – CMAM
 - **Afghanistan** (Action for Development) – SBC and Family MUAC
 - **South Sudan and Somalia** (IMC) – SBC

Capturing outstanding questions

en-net English Basculer vers en-net Français Log in to en-net Create account

COVID-19 and nutrition programming

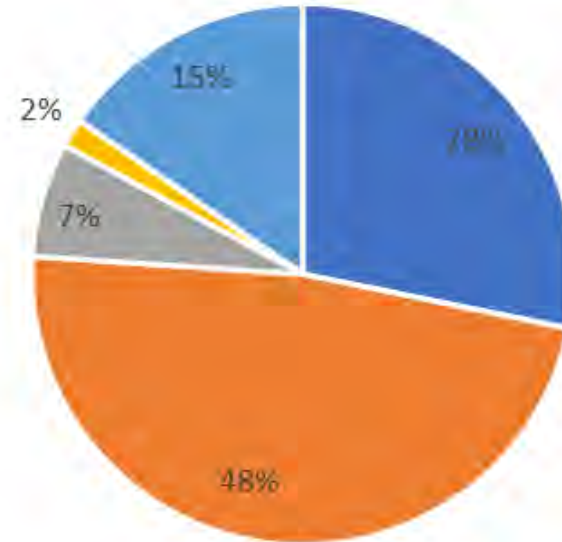
» Submit a new question

Topic	Views
NEW Updates on Maternal and Child Health, Nutrition and COVID-19 - scientific journal articles – 8 October 2020	921
What does the science tell us on Maternal, Child Health, Nutrition and COVID-19 - new updates	235
What can we do to ensure food security in the context of COVID-19?	295
If fresh foods are unavailable, how can packaged foods be used to provide as diverse a diet as possible?	542
Data or experiences of changes in patterns of wasting in the context of COVID-19	260
UNICEF-WHO guidelines 2020 prevention and treatment of wasting during Covid19	419
Can preventative/ blanket feeding programmes provide supplements for even longer during the pandemic?	
Should fruit and vegetables be cooked to reduce nutrient loss?	
Should mess...	

The Global Nutrition Cluster Helpdesk provides remote assistance and support for field-based teams in a number of areas. The Helpdesk can be reached via the button below

[Request Help](#)

Questions related to the following themes:



- Infant and young child feeding
- Wasting prevention and management
- Nutrition Information Systems
- Maternal Nutrition
- Cross cutting issues

Supporting the development of rapid/ interim guidance

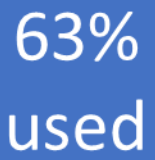


MANAGEMENT OF CHILD WASTING IN THE CONTEXT OF COVID-19

Brief No.1
(March 2020)

To support implementers on how to provide the best care for children in the context of COVID-19 pandemic, a series of guidance briefs will be produced and updated as new information and evidence emerges. This Brief is meant to provide information on the management of child wasting in the context of COVID-19, and it complements other guidance on child wasting. This Brief does not cover wider mitigation and response measures that are being implemented in the community, we will continue to develop our understanding on this in the context of COVID-19.

Documenting and disseminating lessons will be key to implementing the most appropriate and effective programmatic adaptations.



English : <https://www.unicef.org/forums/31.aspx>

<Joint Signatories> call for ALL involved in the response to COVID-19 pandemic to protect, promote, and support the feeding and care of infants and young children and their caregivers. This is critical to support child survival, growth and development and to prevent malnutrition, illness and death.

This joint statement has been issued to help secure immediate, coordinated, multi-sectoral action on infant and young child feeding (IYCF) in line with adopted IYCF guidance in the context of the COVID-19 pandemic response.

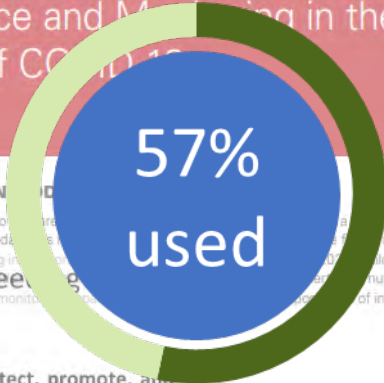
Box 1 - Infant and young child feeding recommendations
Children from birth up to two years are particularly vulnerable to malnutrition, illness and death. Globally recommended IYCF practices protect the health and wellbeing of children and are especially relevant in emergencies. Recommended practices² are:
1) Early initiation of breastfeeding (putting baby to the breast within 1 hour of birth);



Nutrition Information Management, Surveillance and Monitoring in the Context of COVID-19

Brief No. 2
July 2020

BACKGROUND & INTRODUCTION
To support implementers to ensure that evidence-based guidance briefs are produced and updated as new information and evidence emerges, this brief provides information on nutrition information, surveillance and monitoring in the context of COVID-19. It includes guidance on the development of recommendations, nutrition situation analysis and estimating its magnitude, monitoring and reporting of indicators, and alternative ways of data collection.



INFANT & YOUNG CHILD FEEDING IN THE CONTEXT OF COVID-19

Brief No. 2 (v1)
(March 30th, 2020)

To support implementers on how to provide the best care for children in the context of COVID-19 pandemic, a series of evidence-informed guidance briefs will be produced and updated as new information and evidence emerges. This Brief is meant to provide information on infant and young child feeding (IYCF) in the context of COVID-19. This Brief complements other guidance on child wasting. This Brief does not cover wider mitigation and response measures that are being implemented in the community, we will continue to develop our understanding on this in the context of COVID-19.

This brief consolidates recommendations for infant and young child feeding in the context of the COVID-19 pandemic. The recommendations are based on the evidence from the *Operational guidance on infant and young child feeding for Patients with COVID-19 presenting with mild symptoms* (2020) and the *Clinical Management of severe acute respiratory syndrome coronavirus 2 (COVID-19)* (23 March 2020) and *Operational guidance on infant and young child feeding* (2019).



1. Programmes and services to promote and support exclusive breastfeeding (early and exclusive) and age-appropriate and safe complementary feeding practices should remain a critical component of the programming and response for young children in the context of COVID-19.
2. Mothers with suspected or confirmed COVID-19 and isolated at home should be advised to continue recommended feeding practices¹ with necessary hygiene precautions during feeding.
3. Alignment and coordination in the mitigation plans across nutrition, health, food security and livelihood, agriculture, WASH, social protection and mental health and psychosocial support to focus on reaching infants and young children in the context of COVID-19.
4. Actions through relevant systems (Food, Health, WASH, and Social Protection) should prioritize the delivery of preventive services to mitigate the impact of the pandemic on young children's diets and wellbeing with strong linkages to early detection and treatment of child wasting.
5. Full adherence to the International Code of Marketing of Breast-milk Substitutes and subsequent WHA resolutions (including WHA 69.9 and the associated WHO Guidance on ending the inappropriate promotion of foods for infants and young children) in all contexts in line with the recommendations of IFE Operational Guidance.
6. Donations, marketing and promotions of unhealthy foods - high in saturated fats, free sugar and/or salt - should not be sought or accepted.

Capturing field experiences and programme adaptations

Nutrition Innovations and adaptations in the Context of COVID-19
Common Template for collecting programme experiences

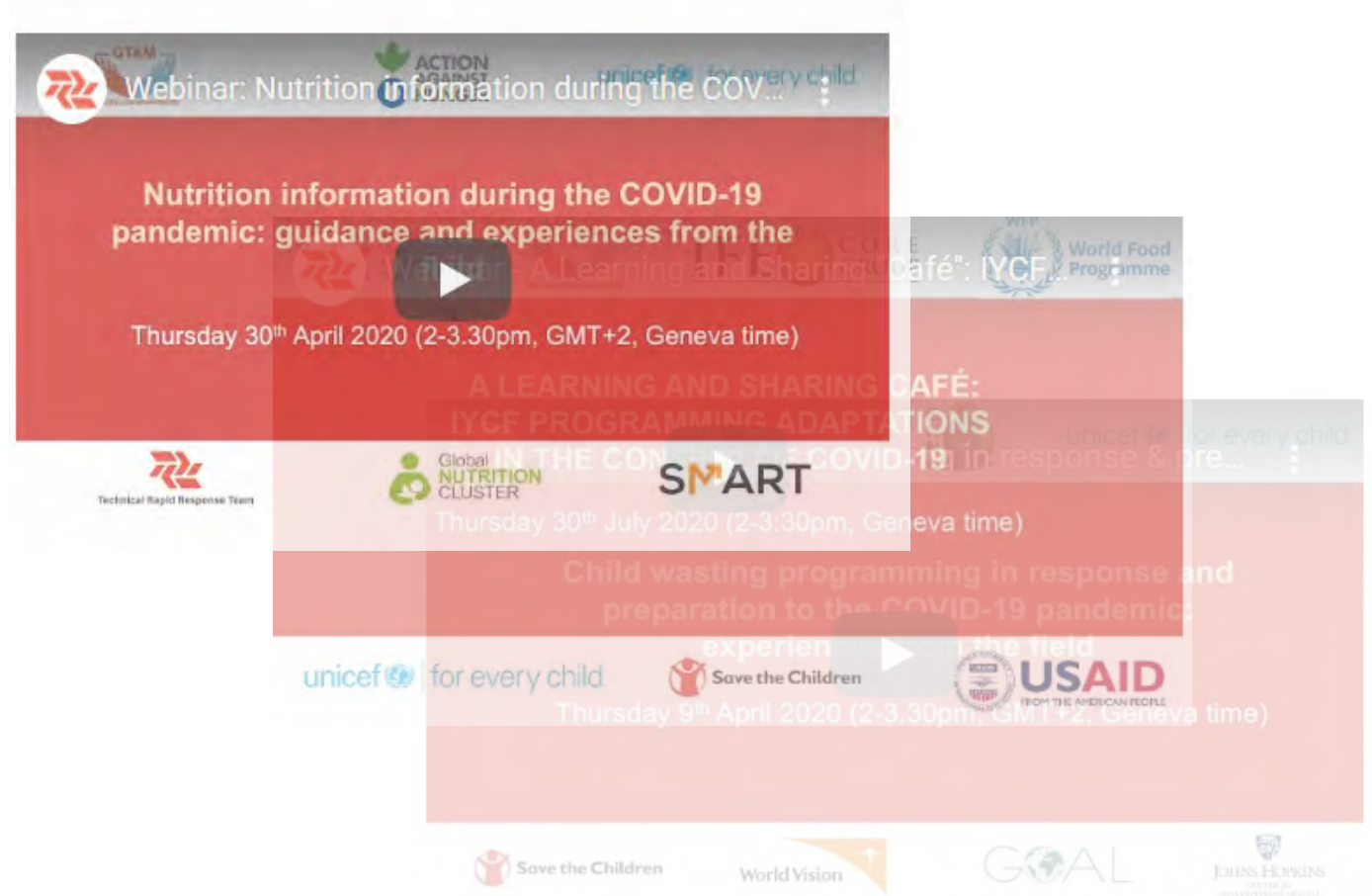
Infant and Young Child Feeding

Collection of potential adaptations on:
Prevention and Management of Wasting;
Nutrition for Infants & Young Children-
IYCF & Micronutrients and Nutrition
Information Systems.

Adaptation Title:	Challenge	Alternative Approach	Relevant Resources/Tools
Adaptation Title: Name of Agency: Location (Country & State): Focal point (Email/Phone): Date: When did you put it in place? Is it still ongoing? <input type="checkbox"/> Yes <input type="checkbox"/> No If not, when did it end? Type of intervention: <input type="checkbox"/> Policy related adaptation <input type="checkbox"/> Training and Capacity building <input type="checkbox"/> Coordination & collaboration <input type="checkbox"/> M&E, Assessments/ Surveys <input type="checkbox"/> Programme/Service implementation <input type="checkbox"/> Preparedness in light of COVID-19 Describe the intervention and aims prior to COVID-19 (100 words max): <i>Include a broad overview of the aims of the programme/intervention.</i> Describe the programmatic adaptations taken in light of COVID-19 and why (300 words max): <i>It would be helpful if this could include the stage of development of the adaptations (planned, being tested,</i>	Restrictions by Restrictions by Community/village Workers/counsellors.	1. Radio/media/social media messages/printed visible images and messages in local languages 2. Announcements eg megaphones. 3. Phone counselling 4. SMS promotion messages 5. Members of groups to support neighbors [maintaining social distancing and hygiene practices] 6. Use of social platforms where applicable like whatsapp groups Note: 1	1. IYCF in the context of COVID-19 Brief 2. UNICEF CCM Guide 3. Peer reviewed articles, documented experiences, digital projects on media/phone apps use in the promotion and support to IYCF https://www.dropbox.com/sh/vekyk4goeayjmdn/AAQZP8QprSGbg43S577Kl2j3a?dl=0
		Category: Products and Supply Chain Challenges Challenge: Protocols in absence of products What do you do when RUTF and RUSF are unavailable? Recommended adaptation: Ensuring good supply chain management; temporary use of different specialised products, use of local recipes, reduced dosage, reduced programme admission and discharge thresholds.	

Capturing field experiences and programme adaptations

12 webinars delivered related to COVID-19 in English, Spanish, French and Arabic



Capturing field experiences and programme adaptations



**Four podcasts on
country
experiences**

Thank you to all who posed questions, provided input into guidance, shared programme adaptations and participated in webinars and podcasts!



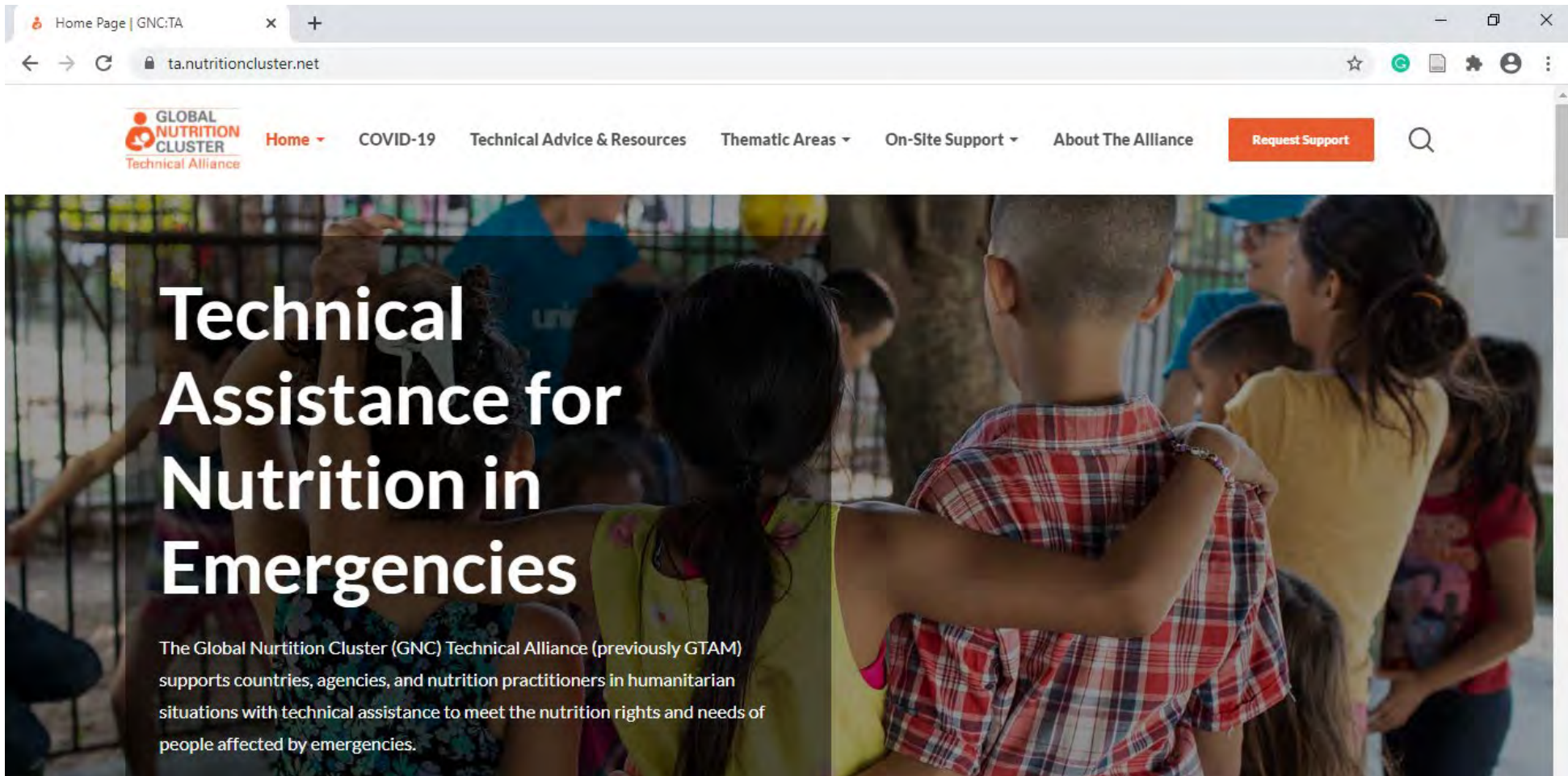
Question and Answer Session

Please write your
questions in the
Q&A box



Where can I find the Alliance?

ta.nutritioncluster.net



Advice | Guidance | Expertise | Learning



Ask a question

our team is ready to help

You need technical guidance? Please check if your problem was already described in our advice and resources section.

Contact Form

Fill in the form below to get in touch with the **Technical Alliance Team**

Name and Surname



Email Address

Type of Organization



Location



Region



Type of Enquiry



Request Urgency



Subject of Request

Description

Dan Irvin (World Vision)

Thank you for joining us today

And to our Donors who make GNC Technical Alliance possible



Advice | Guidance | Expertise | Learning