

nutritioncluster.net



ANNUAL  
MEETING  
**2022**

**GNC**  
Our  
Future

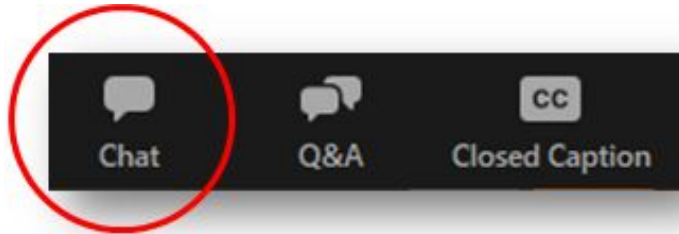
# Infant and Young Child Feeding in Emergencies (IYCF-E)—What's Happening in 2023

Infant Feeding in Emergencies  
IFE Core Group

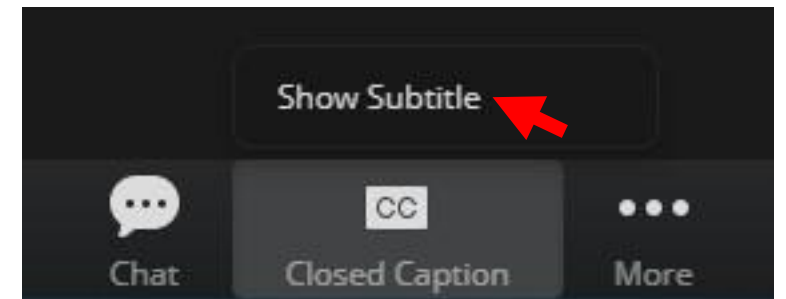
# ZOOM MEETING REMINDERS



- If at any point during today's webinar you are unable to hear the speakers, please make sure you've connected your audio by selecting the headphones icon.



- Please send a message to *Everyone* in the chat box to introduce yourself, send in your questions, or ask for support during today's webinar.
- Closed captioning in English has been enable for this meeting, to view the live English subtitles on your screen, click on the CC icon and select to *Show Subtitle*.
- Finally, please note that this meeting is being recorded.



# OUTLINE

## Introduction

- What is the IFE Core Group (CG)? What does the IFE CG do?

## What's coming up in Infant and Young Child Feeding in Emergencies (IYCF-E)

- 10 Years of Progress in IYCF-E
- IYCF-E Capacity Assessment
- Case Studies Breastmilk Substitute-dependent infant's management during emergencies
- Lessons Learned: Ukraine Early IYCF-E Response
- Assessment Ukraine
- Operational Guidance: Wet nursing
- Complementary Feeding in Emergencies (CFE) Country Guidance
- Operational Guidance: IYCF-E How-To implement in your country
- Code/Donations—interpretive document update
- Translations

## Session Title:

IFE Core Group GTWG

Date: 31.1.23



*Individual members: Caroline Abla, Brooke Bauer, Bindi Borg, Karleen Gribble, Hiroko Hongo, Isabelle Modigell, Yara Sfeir, Victoria Sibson, Mija Tesse-Ververs, Magdalena Whoolery*

**STEERING COMMITTEE**  
standing members



## WHAT IS THE IFE CORE GROUP?

- Established in 1999, Created to respond to concerns and gaps related to **infant and young child feeding during emergencies**.
- A **global collaboration** of agencies and individuals committed to the **protection, promotion, and support** of appropriate infant and young child feeding in emergencies.
- Together, dedicated to ensure more effective IYCF-E support in emergency contexts by **strengthening learning; guidance and policies; planning and capacity** in IYCF-E.

[www.ennonline.net/ife](http://www.ennonline.net/ife)



ANNUAL MEETING  
**2022**

Our Future

**IFE CORE GROUP**  
**Global Thematic Working Group on IYCF-E**

Individual members: Caroline Abia, Brooke Bauer, Bindi Borg, Karleen Gribble, Hiroko Hongo, Isabelle Modigell, Linda Shaker Barbari, Lourdes Santabalia, Victoria Sibson, Mija Tesse-Ververs.

part of:

**Global NUTRITION CLUSTER**  
**GLOBAL NUTRITION CLUSTER**  
**Technical Alliance**

Coordinates and engages with:

The **COVID-19 Infant Feeding Research Interest Group and Working Group**

**GLOBAL BREASTFEEDING COLLECTIVE**  
unicef | World Health Organization

**NetCode**

**Other agencies and sectors**

**Session Title:**

IFE Core Group GTWG

Date: 31.1.23



# What does the IFE Core Group do?



**Ensure more effective Infant and Young Child Feeding (IYCF-E) support in emergency contexts**



15/16/18 November 2021, Virtual meeting



4-12 November 2020, Virtual Meeting

## Session Title:

IFE Core Group GTWG

Date: 31.1.23

# 10 Years of Progress

The report aimed to

**Review progress** in fulfilling World Health Assembly commitments to IYCF-E

**Highlight the experience** of Member States and the humanitarian and development community in this journey

**Galvanize Member States** and the humanitarian and development community to deliver on their global IYCF-E commitments

Infant and Young Child Feeding in Emergencies:  
**TEN YEARS OF PROGRESS**



July 2022



## Session Title:

IFE Core Group GTWG

Date: 31.1.23



ANNUAL MEETING  
2022

Our Future

# 10 Years of Progress

## Observations

Progress has been made in the number of Member States with specific policies aligned with the Operational Guidance-Infant Feeding in Emergencies (OG-IFE), despite a lack of globally coordinated, strategic, and sustained policy advocacy

**Governance and accountability mechanisms** for multi-sectoral IYCF-E action across humanitarian and development contexts at country and global levels are inconsistent

**Data gaps highlight opportunities** to improve the way that we measure, assess, and communicate IYCF-E needs, capacities and responses

### Session Title:

IFE Core Group GTWG

Date: 31.1.23

## Infant and Young Child Feeding in Emergencies: TEN YEARS OF PROGRESS



ANNUAL MEETING  
2022

Our Future



# 10 Years of Progress

## Opportunities

**A focused shift from “WHAT” to do for IYCF-E as described in the OG-IFE to an expansion of tools and operational guidance on “HOW” to deliver on IYCF-E at scale**

Deepening of learning and expertise for **care of the non-breastfed infants and meaningful complementary feeding** as part of IYCF-E programming and the overall response

System building between IYCF and IYCF-E policy and programming to address emerging issues of **maternal and adolescent nutrition, managing infant wasting, and improved mental health and psychosocial support** at the advocacy, policy, programming, and research levels

### Session Title:

IFE Core Group GTWG

Date: 31.1.23

## Infant and Young Child Feeding in Emergencies: TEN YEARS OF PROGRESS



July 2022



ANNUAL MEETING  
2022

Our Future

# 10 Years of Progress

## First Steps

**For governments: Ensure** that national and international preparedness plans and emergency responses include **adequately funded actions as the operational guidance outlines**

**For humanitarian and development community: Develop and deliver on a policy advocacy agenda to promote uptake of actions**

## Infant and Young Child Feeding in Emergencies: TEN YEARS OF PROGRESS



July 2022



### Session Title:

IFE Core Group GTWG

Date: 31.1.23



ANNUAL MEETING  
2022

Our Future

# 10 Years of Progress

## Where to from here?

### As a collective:

- Advocate to **revise humanitarian and development guidance documents** and **define inter-cluster commitments** to support multi-sectoral collaboration for IYCF-E, whether or not the cluster system is activated
- Support the **inclusion of IYCF-E indicators** in Humanitarian Needs Overviews, Humanitarian Response Plans and geographic targeting of sectoral responses, and create a common way to identify IYCF-E relevant programming in Humanitarian Response Plans.
- Support the sharing of research and lessons learned to improve IYCF-E programming, including investment to **support accessibility beyond the “gray literature” into formal publication channels**

### Session Title:

IFE Core Group GTWG

Date: 31.1.23

## Infant and Young Child Feeding in Emergencies: TEN YEARS OF PROGRESS



July 2022



ANNUAL MEETING  
2022

Our Future

# 10 Years of Progress

## Where to from here?

### At country level:

- Continue your bold and pragmatic **engagement with the policy, programming, advocacy, and research for emergency preparedness and response**
- Engage in **policy advocacy and system building** with national actors to identify opportunities to embed and expand IYCF-E relevant policy and programming
- Support development of **robust country-level nutrition information systems and capacities** to track risks to recommended feeding practices for infants and young children **and apply these data** in policy, programming, advocacy, and research decisions.

## Infant and Young Child Feeding in Emergencies: TEN YEARS OF PROGRESS



July 2022



### Session Title:

IFE Core Group GTWG

Date: 31.1.23



ANNUAL  
MEETING  
2022

GNC  
Our  
Future



# 10 Years of Progress

## Where to from here?

### At agency level:

- Add your voices to **the global policy advocacy and communications** around the findings and opportunities
- Define **individual agency commitments to IYCF-E** and ensure that respective agency policies, processes, competencies, capacity development and resources reflect these commitments

## Infant and Young Child Feeding in Emergencies: TEN YEARS OF PROGRESS



July 2022



### Session Title:

IFE Core Group GTWG

Date: 31.1.23



ANNUAL MEETING  
2022

Our Future

# GNC 2021—WHAT WE HEARD

What you told us at the last GNC Annual meeting:

<https://docs.google.com/document/d/1zblYCdLE4lepElcQowKoPGQQACdv05lEXlPl7MurJVs/edit>

- Advocacy for better IYCF-E
- Support to help countries meet their World Health Assembly commitment to include OG-IFE in country plans
- Help stem flow of donations and inappropriate distribution
- More funding and support to nurture and amplify local IYCF-E expertise
- Guidance with IYCF-E indicators
- Support for BMS-dependent families
- Wet nursing and relactation support and guidance
- More resources translated into key languages
- Media and communications creators need help to use appropriate words and images

## Session Title:

IFE Core Group GTWG

Date: 31.1.23

# GNC 2023—LOOK FORWARD

- IYCF-E Capacity Assessment
- Case Studies BMS dependent infant management during emergencies
- Lessons Learned: Ukraine Early IYCF-E Response
- Assessment Ukraine
- Operational Guidance: Wet-nursing
- CFE Country Guidance
- OG-IFE How-To implement in your country
- Code/Donations—update to interpretive document
- Translation support

## Session Title:

IFE Core Group GTWG

Date: 31.1.23

# IYCF-E CAPACITY ASSESSMENT

## Infant and young child feeding in emergency capacity assessment guidance and tool

### What is it?

A proposed process to do an IYCF-E capacity assessment at national level. It is composed of

1. A guidance note, in pdf, detailing the process or the step by step suggestions on how to go about doing an IYCF-E capacity assessment and
2. Questions, an Excel file, to which country teams need to answer and subsequently identify the gaps in capacity.

### By who?

National IYCF working group or IYCF-E Technical Working group

### Why?

For country teams to collectively assess their readiness to respond and develop a work plan to strengthen capacity in identified gaps, ultimately to improve the response and save infant's lives

### How often?

Once a year, as for the nutrition cluster coordination performance monitoring

### When will it be available? Where can I find it?

Available in February 2023, contact the GNC Alliance via the request button on <https://ta.nutritioncluster.net/>

### Session Title:

IFE Core Group GTWG

Date: 31.1.23



# COMPENDIUM OF CASE STUDIES

## For the management of BMS-dependent infants in emergency

UNICEF commissioned a compendium of case studies from a select number of countries—**Haiti, Iran, Lebanon, Myanmar, the Sudan and Ukraine**—to document lessons learned in implementing UNICEF’s updated guidance.

The availability of documented good practice examples have been limited. These case studies aim to fill this gap by illustrating the appropriate provision of BMS to support the nutritional needs of mixed-fed and non-breastfed infants.

### Session Title:

IFE Core Group GTWG

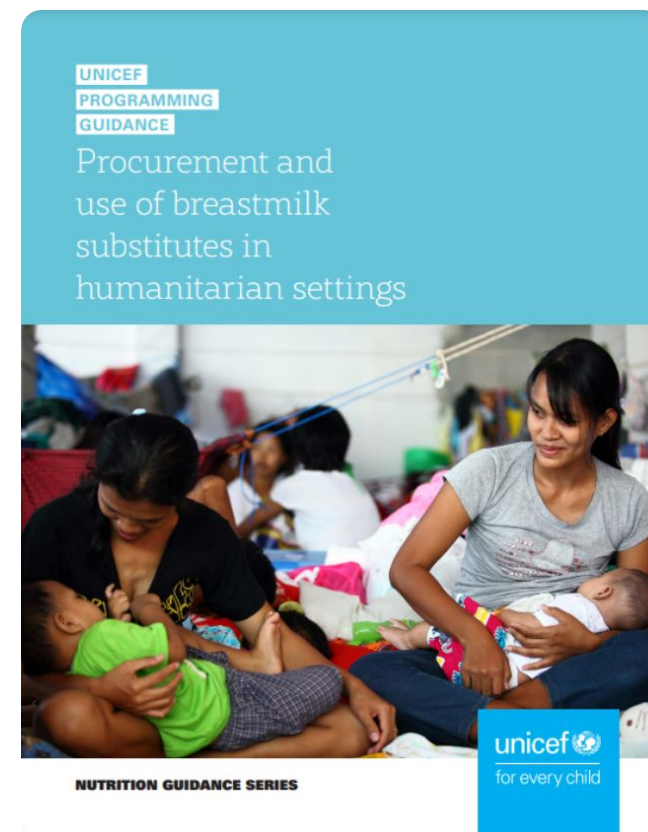
Date: 31.1.23

# UNICEF'S POSITION

## On the management of non-breastfed infants in emergency

Breastfeeding is the safest way to feed an infant, especially during an emergency. When an infant is not breastfed by his or her mother, global guidelines recommend that emergency response programmes explore, in priority order, **the viability of re-lactation, wet nursing, and donor human milk**, informed by cultural context, current acceptability to mothers and service availability. If these options are not acceptable to mothers/caregivers or feasible to deliver, programmes must enable access to a sustainable supply of appropriate breastmilk substitutes (BMS), accompanied by an essential support package.

In 2021, UNICEF updated its guidance on the Procurement and Use of Breastmilk Substitutes in Humanitarian Settings. The guidance states that where BMS procurement is warranted in humanitarian settings, **UNICEF is a provider of first resort** and UNICEF can procure BMS whether or not the cluster has been activated as part of an overall humanitarian response that supports optimal IYCF.



### Session Title:

IFE Core Group GTWG

Date: 31.1.23

# LESSONS LEARNED—EARLY IYCF-E RESPONSE TO THE UKRAINE

## CRISIS

**Goal :** Document lessons learned around the preparation for, establishment and early implementation of IYCF-E programming as part of the Ukraine Emergency Response, highlighting key technical reflections that may be applicable for future, similar responses.

### **Objectives:**

- Describe the initial IYCF-E response, including key successes, compromises, and gaps.
- Identify facilitating factors and barriers to meeting identified IYCF-E needs at the start of the response (e.g., contextual, cultural, programmatic)
- Capture key lessons learnt for Public Health/Nutrition in Emergencies (NiE) practitioners and local IYCF/breastfeeding supporters to inform future, similar responses.

**Scope:** Early response; country/response level; technical

**Status:** Desk review and key informant interviews nearing completion.

Next: Online survey for Ukrainian breastfeeding supporters

**Led by:** Isabelle Modigell (ENN Consultant)

on behalf of the GNC Technical Alliance

**For further info/ contributions:**  
[isabelle.modigell@ennonline.net](mailto:isabelle.modigell@ennonline.net)

### **Session Title:**

IFE Core Group GTWG

Date: 31.1.23

# IYCF-E ASSESSMENT—UKRAINE



How has the *conflict changed mothers' choices* to feed their infants?

What critical actions and investments will *help protect the nutrition practices* of women during this emergency—and the long-term health of their infants?

How can we *mobilize governments and donors* to support infant feeding practices in Ukraine?

## FHI 360: Nutrition Assessment in Ukraine and Poland (September to October 2022)

- **Interviews with mothers**
- **Meetings with lactation counsellors**
- **Visits to relocation centers for displaced Ukrainians**
- **Visit to regional hospital**
- **Engaged UNICEF 'Blue Dot' locations**
- **Met with Government coordinators**

### Session Title:

IFE Core Group GTWG

Date: 31.1.23



ANNUAL MEETING  
2022

Our Future



# IYCF-E ASSESSMENT—FINDINGS

Infant nutrition is an *unseen crisis in Ukraine*, with a lack of recognition, advocacy, and support.

Deterioration in breastfeeding and nutrition practices now will have *long-term health impacts* on these children well into the future.

*Lack of widespread support from lactation counselors*—and they predict the situation will get worse.

*Formula donations* are flooding centers for displaced Ukrainians and refugees – but with no education or cleaning utensils.

Women are not receiving nutrition support or guidance, resulting in *unsafe feeding practices for infants*.

- **“How will I feed my baby?”**
- **Women stopping breastfeeding due to *perceived stress and fear*.**
- **Women’s plans to breastfeed were disrupted due to migration, conflict, and lack of support.**
- **Women are receiving donations of all type of milk.**
- **Adolescent mothers are not receiving support and guidance giving birth and are using infant formula.**
- **Women are concerned about the quality of food they are receiving for their infants but are unable to afford anything else.**



## Session Title:

IFE Core Group GTWG

Date: 31.1.23



ANNUAL MEETING  
2022

Our Future

# IYCF-E ASSESSMENT—PLANNED MILESTONES

## What's next



### Session Title:

IFE Core Group GTWG

Date: 31.1.23



ANNUAL MEETING  
2022

Our Future

# OPERATIONAL GUIDANCE: WET NURSING

## What is it?

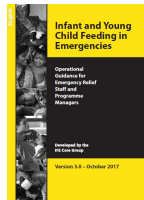
Operational guidance to provide emergency responders with reassurance and practical direction on when, why and how to protect, promote, and support the practice of wet nursing during emergencies.

## By who?

Led by Isabelle Modigell (Consultant) on behalf of UNICEF with support from an IFE Core Group Technical Advisory Group

## Why?

To meet a long-standing and recurring need for guidance which details how to implement OG-IFE (IFE CG, 2017) recommendation 5.11



**5.11** Where an infant is not breastfed by his/her mother, quickly explore, in priority order, the viability of relactation, wet nursing and donor human milk, informed by cultural context, current acceptability to mothers and service availability.

## Status?

Underway, to be completed in 2023.

**For further info/contributions:**  
[isabelle.modigell@ennonline.net](mailto:isabelle.modigell@ennonline.net)

## Session Title:

IFE Core Group GTWG

Date: 31.1.23

# CFE COUNTRY GUIDANCE

## Complementary Feeding in Emergencies

### What is it?

Continuing to build and expand on Complementary Feeding in Emergencies guidance in the coming two years.

### By who?

Led by IFE Core Group with partners.

### Why?

In a review of CFE conducted in 2019, the IFE-CG identified that there was a gap in the “how-to” of supporting the diets of young children in emergencies

### When will it be available? Where can I find it?

Underway in 2023, stay tuned.

**For further info/contributions:**  
Jodine Chase [ife@enonline.net](mailto:ife@enonline.net)

### Session Title:

IFE Core Group GTWG

Date: 31.1.23

# OG-IFE: HOW TO IMPLEMENT IN YOUR COUNTRY

Operational Guidance for Infant and Young Child Feeding in Emergencies

## What is it

A “how to” guide for those seeking to implement the OG-IFE at the country level. Will include an OG-IFE template with pointers on “how to adapt” for national guidelines

## By who?

Led by IFE Core Group.

## Why?

Countries have indicated a need

## When will it be available? Where can I find it?

Underway in 2023, stay tuned.

**For further info/ contributions:**  
Jodine Chase [ife@ennonline.net](mailto:ife@ennonline.net)

## Session Title:

IFE Core Group GTWG

Date: 31.1.23



# CODE/DONATIONS INTERPRETIVE DOC—UPDATE

International Code of Marketing of Breastmilk Substitutes—donations and distribution

## What is it

And update of interpretive guidance on the Code and Donations/Distribution

## By who?

Led by IFE Core Group

## Why?

To include WHA 69.9 and other updates/clarifications

## When will it be available? Where can I find it?

Underway in 2023, stay tuned.

**For further info/contributions:**  
Jodine Chase [ife@enonline.net](mailto:ife@enonline.net)

## Session Title:

IFE Core Group GTWG

Date: 31.1.23

# TRANSLATION INITIATIVE

## What is it

A translation request and prioritisation system, and a framework for action which identifies various translation options and related processes

## By who?

Led by IFE Core Group

## Why?

To broaden access to translation by incorporating third-party efforts so we have rapid translation, prioritization of efforts and quality control

## When will it be available? Where can I find it?

Underway in 2023, stay tuned.

**For further info/ contributions:**  
Jodine Chase [ife@enonline.net](mailto:ife@enonline.net)

## Session Title:

IFE Core Group GTWG

Date: 31.1.23



ANNUAL  
MEETING  
2022

GNC  
Our  
Future

# WHAT CAN THE IFE CORE GROUP DO TO ADDRESS CHALLENGES IN IYCF-E

PLEASE GO TO THIS

## IFE Core Group

Infant and Young Child Feeding in Emergencies and the IFE Core Group: Strategies, directions and opportunities for engagement

You told us was important to you at the last GNC Annual Meeting: (click here if you want to refresh your memory or review the input from your colleagues) [2021 engagement results](#)

You've heard what is coming for 2023.

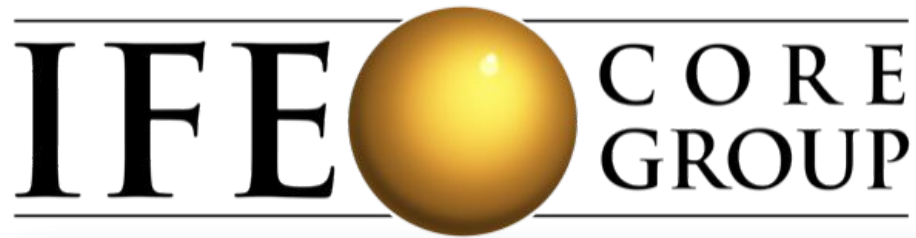
- *IYCF-E Capacity Assessment*
- *Case Studies non-bf infant's management during emergencies*
- *Lessons Learned - Ukraine*
- *Assessment Ukraine*
- *Wet-nursing Guidance*
- *CFE Country Guidance*
- *OG-IFE How-To implement in your country*
- *Code/Donations - update to interpretive document*
- *Translation support*

**What are the greatest unmet needs in 2023?**

<i>Name (optional)</i>	<i>Country/ Region</i>	<i>Organisation</i>	<i>Please share unmet needs:</i>



# QUESTIONS & ANSWERS



## CONNECT WITH US

### EN-NET.ORG

EN-NET IS ENN'S PRIVATE, MODERATED FORUM FOR DISCUSSION AND INFORMATION. THE IYCF FORUM IS THE BUSIEST ON EN-NET.

### IYCF-E HUB

[IYCFHUB.ORG/](http://IYCFHUB.ORG/)

GLOBAL PORTAL TO THE MOST RELEVANT RESOURCES RELATED TO INFANT AND YOUNG CHILD NUTRITION IN HUMANITARIAN CONTEXTS!

### IFE CORE GROUP

[ENNONLINE.NET/IFE](http://ENNONLINE.NET/IFE)

RESOURCES AND OUTPUTS FROM THE IFE CORE GROUP ARE ON OUR WEBSITE



ANNUAL  
MEETING  
2022

GNC  
Our  
Future





ANNUAL  
MEETING  
**2022**

**GNC**  
Our  
Future

# THANK YOU

[nutritioncluster.net](https://nutritioncluster.net)